



University of Pittsburgh

SAC-PA2

June 15, 2018





MINI-DMZ @ PITT

USE CASE #2

Christopher Keslar

Background

- Lab Equipment that can not be connected to campus network
 - Old operating systems
 - Could not run standard images
- There was data on these devices that needed to be transferred
- Work arounds, sub-optimal workflows



Along came the Mini-DMZ

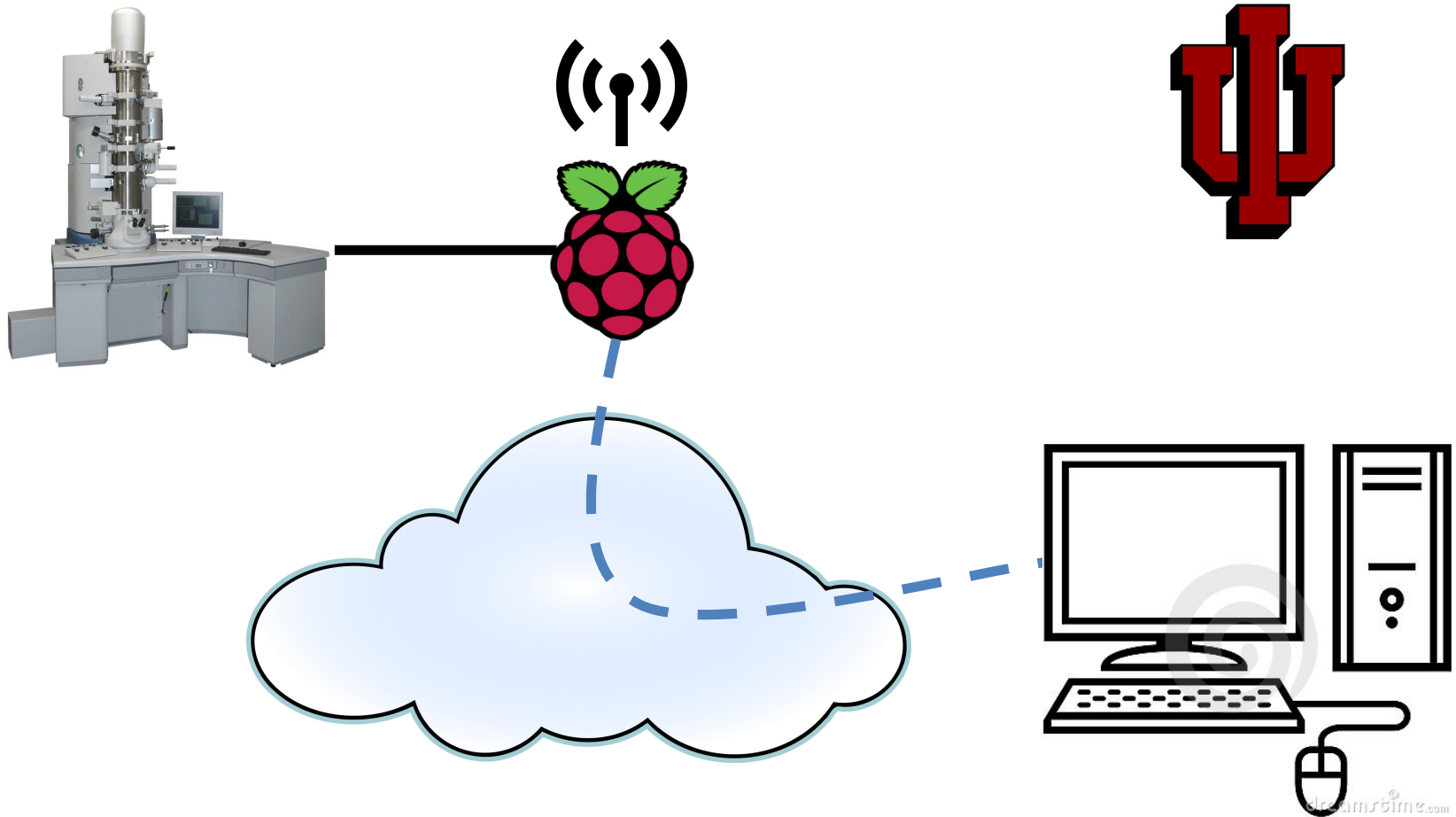


The Hardware



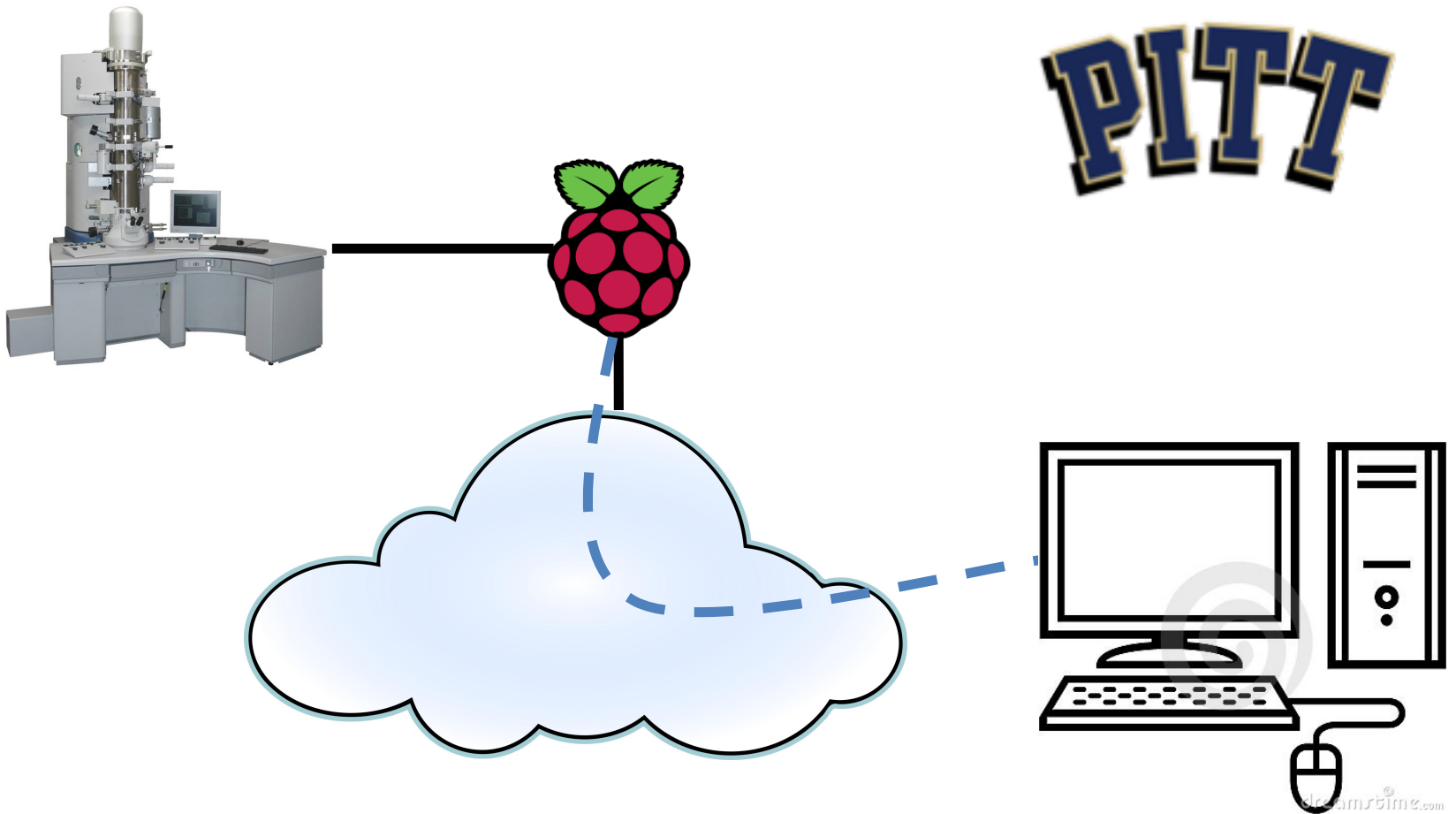


Differences in our environments





Differences in our environments





Differences in our environments



vs.



Shibboleth.



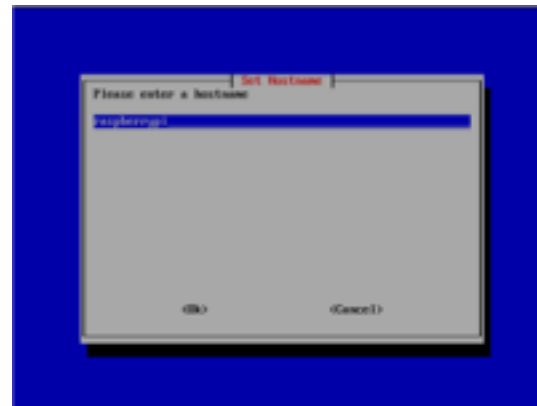
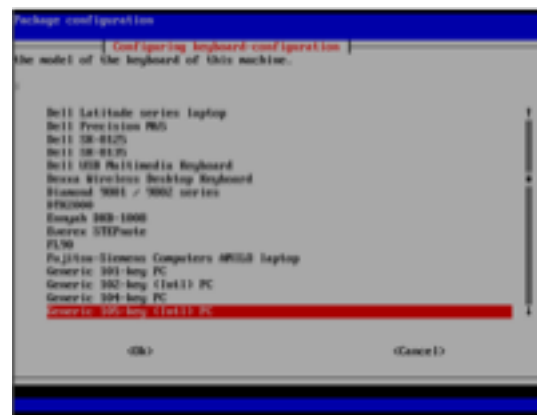
First Installation Experience

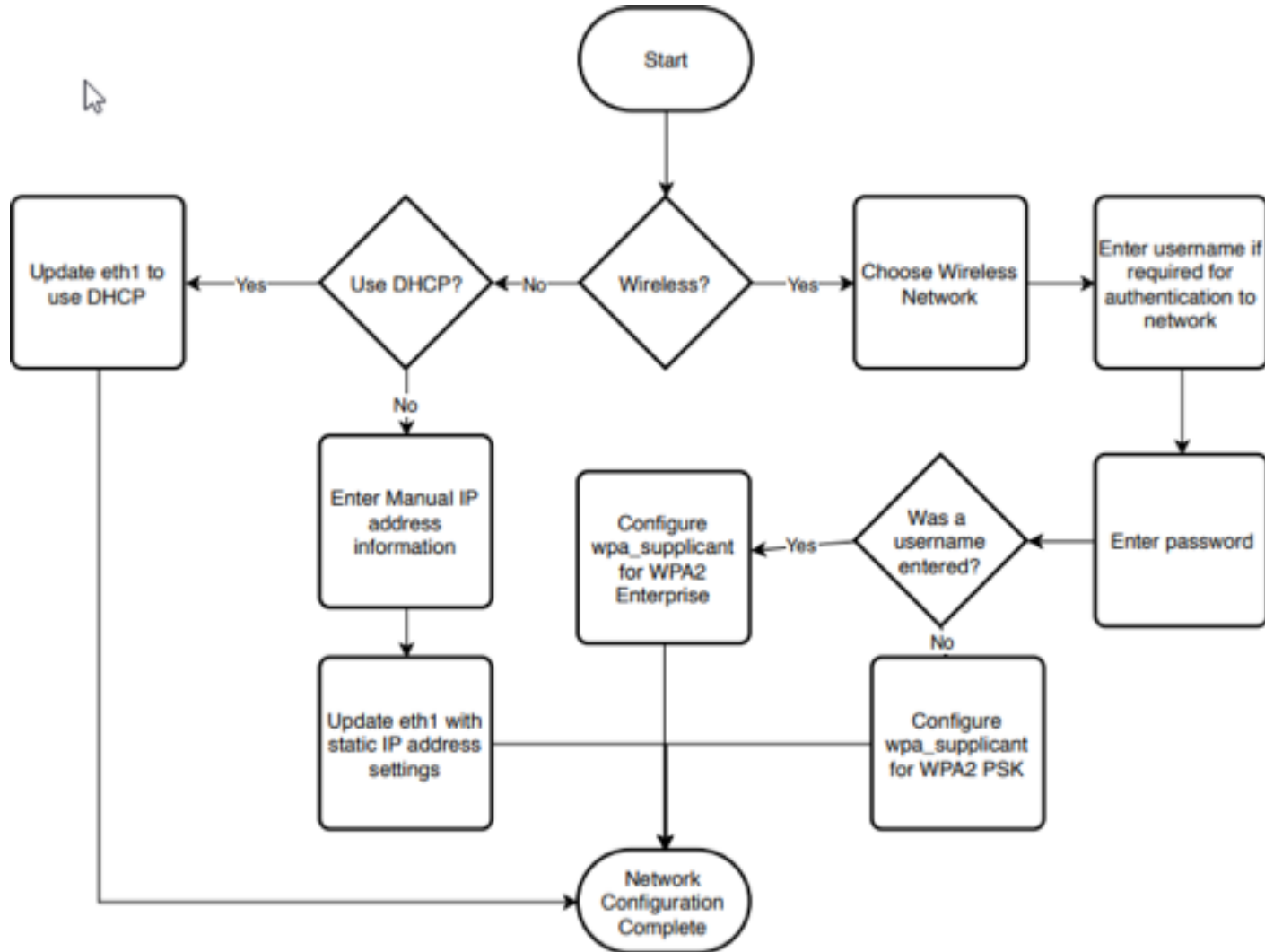
- Required editing installation scripts
- Wireless networking only
- Required rebooting for network configure
- CAS vs Shibboleth

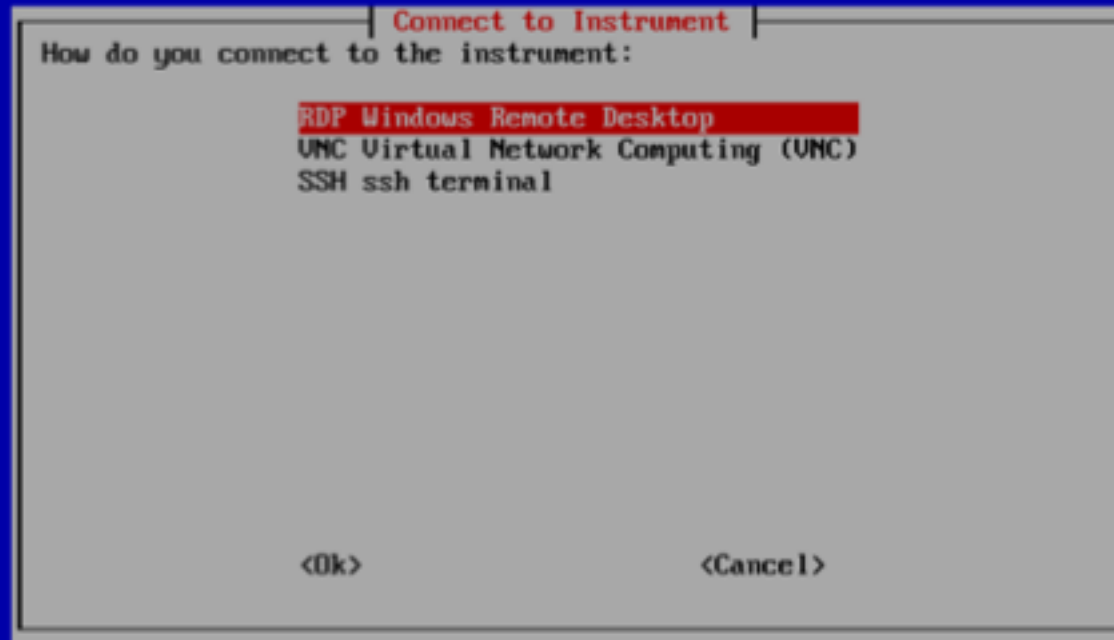


How could Pitt help?

- Interactive setup
- Miscellaneous Linux setup issues:
 - Keyboard setup (Raspbian defaults to UK keyboard)
 - Time zone
 - Create new user, disable pi user
- Networking
 - Wireless or Wired campus connection
 - No need to reboot
- User selectable Guacamole options
- User testing and feedback









Questions?



Thank You